

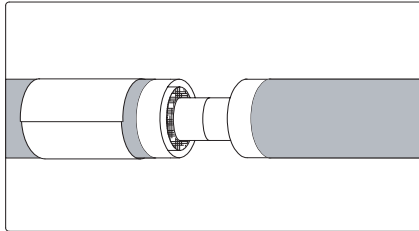
INSTALLATION PROCEDURE FOR JOINT CLOSURES WITH CLASS "A" STEEL PIPING SYSTEM

Materials & Equipment

MATERIALS:

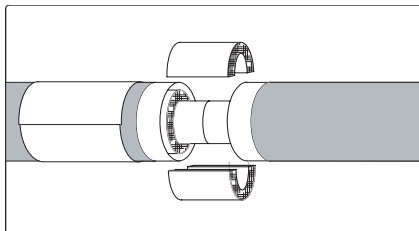
1. Sectional Insulation
2. (2) 1/2" Stainless Steel Bands (for insulation)
3. Conduit Sleeve

Step 1.



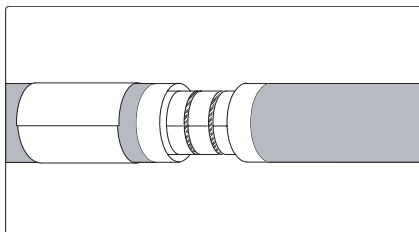
Carefully cut and remove shipping straps from carrier pipe and conduit. Factory recommends use of a grinder to remove straps. **DO NOT CUT OR GOUGE PIPE WHEN REMOVING STRAPS.** Insure that a conduit sleeve is on only one end of the pipe ends to be welded. Weld carrier pipes together at joint. After weld has cooled, hydro-test as per specifications.

Step 2.



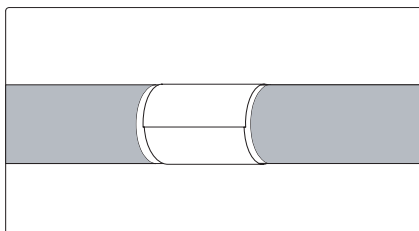
After pressure test, insulate the joint using sectional insulation.

Step 3.



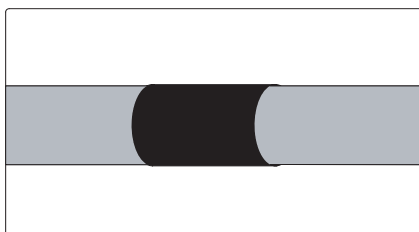
Secure insulation in place using (2) 1/2" stainless steel bands.

Step 4.



Slide conduit sleeve over joint and weld in place. After weld has cooled, pressure test as per specifications.

Step 5.



As per specification, either coat conduit sleeve, apply heat shrink sleeve, or both.

IMPORTANT: THE JOINT AND JOINT MATERIALS MUST BE KEPT DRY!!